

iPhone EagleEyes Configurations

Prerequisites

Before using this function, make sure:

- ✓ Your DVR supports iPhone Push Notification.
- ✓ Your camera supports human detection and is connected to the correct channel which supports DCCS function.

Note: For details, please check with your installer or distributor.

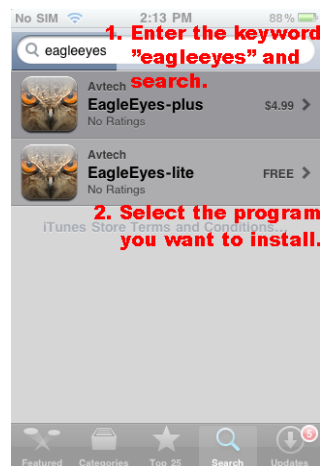
- ✓ Your DVR is powered on and connected to Internet.
- ✓ You have noted down the IP address, port number, user name and password used to access your DVR from Internet.

Software download & Installation

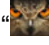
1. Go to "App Store" via your iPhone.
2. Search the program with the keyword "eagleeyes".
Select "EagleEyes-lite" for free download, or "EagleEyes-plus" with a charge of \$4.99.

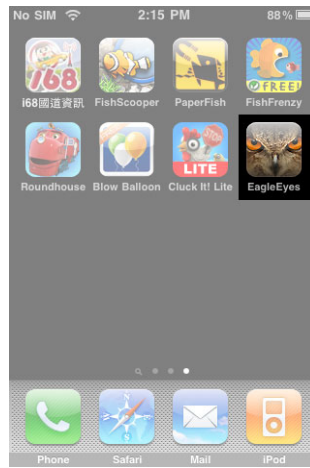
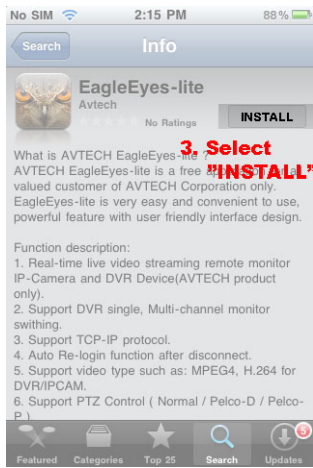
Note: For details about the differences between these two programs, please check with your installer or distributor.

Note: You might be charged for Internet access via wireless or 3G networks. For the Internet access rate details, please check with your local network operator or service provider.



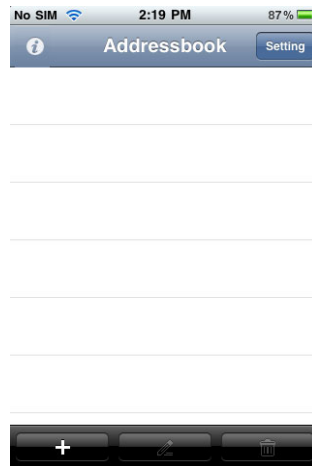
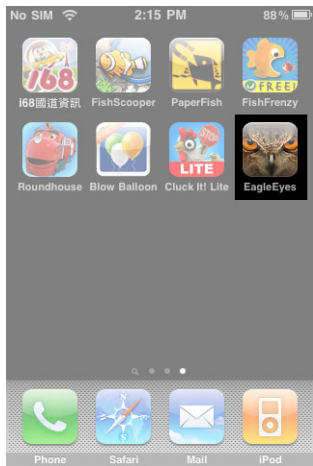
3. Read the introduction of the program if needed, select "INSTALLED" to start the installation.

Follow the on-screen instructions to download and install the program.  will be shown on the iPhone desktop for quick access when the program is installed successfully.

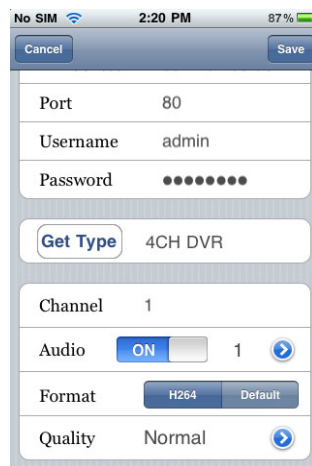


Software Setup

1. Select "EagleEyes" to enter "Addressbook", and select "+" at the bottom left corner to enter the DVR IP address setting page.

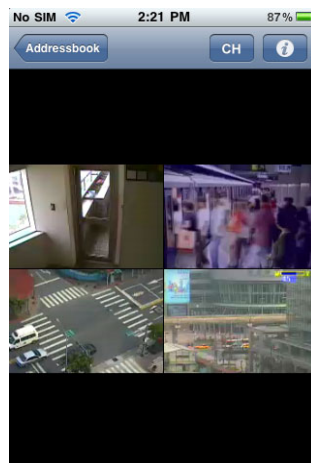
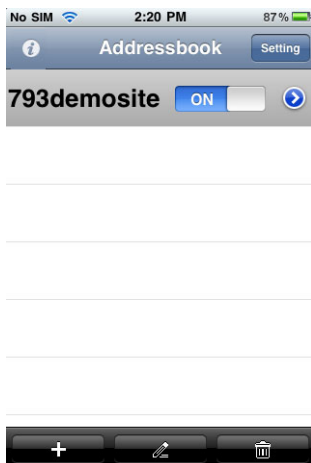


2. Give a meaningful title to this IP setting, and enter the IP information needed to access your DVR. Make sure all the information is correct, and select "Save" on the top right corner to save your setting and return to the address book page.



Column	Description
Required Column:	
Title	Give a meaningful title to this IP setting.
IP Address / Port	Enter the IP address and port number used to access the DVR remotely.
Username / Password	Enter the user name and password used to access the DVR remotely. The default user name and password are both "admin".
Get Type	Click this button to detect the device type based on the IP data entered in the previous columns, allowing users to check whether the device they want to connect is the right device, and allowing the system to enable the functions and settings the device supports.
Optional Column:	
Audio	Click ">" to select the audio channel you want, and slide to enable or disable the audio function. Note: Before using this function, check whether the camera which supports audio is connected to the right audio channel on the DVR. For details, please refer to your DVR user manual.
Format	Select the network transmission format.
Quality	Click ">" to select the image quality from Best, High, Normal or Basic.

- To check whether your configurations are correct, select ">" to immediately access the DVR you just added. You should be able to see the live view of your DVR.

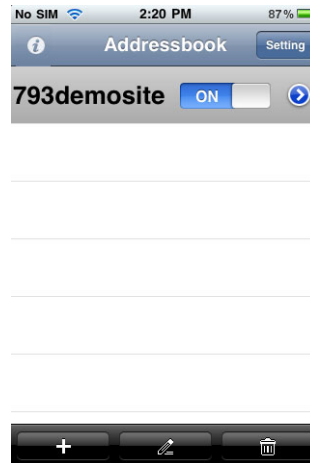
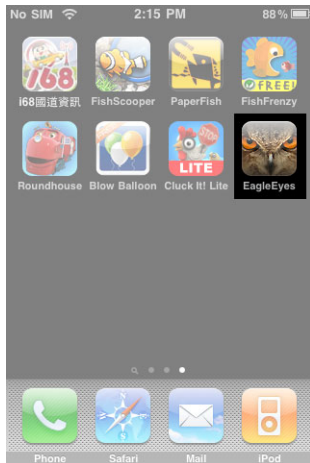


Push Notification Setup

1. Return to your iPhone main menu, and select "Settings". In "Settings", make sure "Notifications" is set to "On". If not, please manually change it.



2. Then, return to the iPhone main menu, and select "EagleEyes" to enter the address book. Select the title you just added, and make sure the button is set to "ON" to enable the Push Notification support of this DVR.

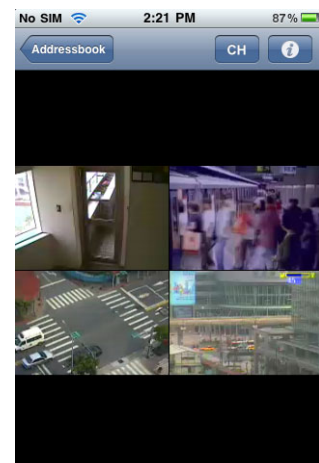
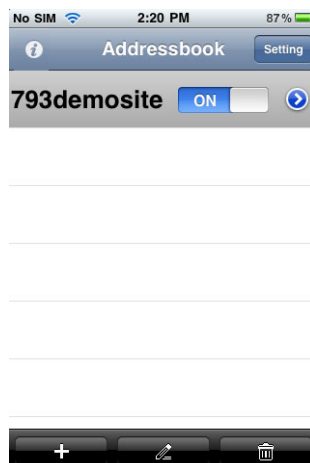
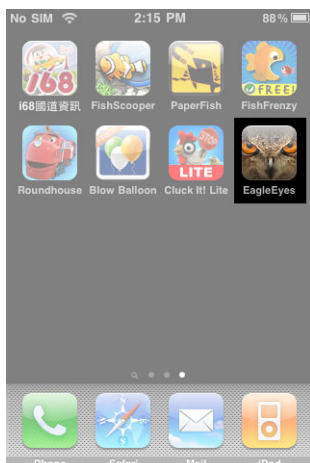


3. Now, you're ready to receive Push Notifications via your iPhone when an event alarm is triggered.

Live View Access

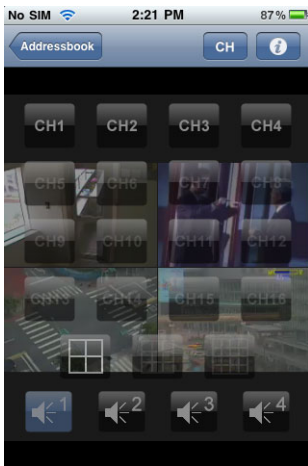
Select "EagleEyes" to enter the address book, and select ">" to immediately access the DVR remotely.

Note: To check the live view in full screen, you can rotate your iPhone horizontally.



Menu Operation

- To switch between channels or select the audio channel to hear the live audio, select “CH” on the top right corner to show the channel control panel as follows.



- To control the connected PTZ camera, switch to the channel connecting to a PTZ camera, and do with your finger(s) on the screen as follows:

If you want to ...	Please do as follows ...
Move up / down / left / right	Touch and slide up / down / left / right.
Zoom in / out	In: Gently move your fingers away from each other. Out: Gently move your fingers towards each other.
Max. zoom in / out	Double touch the screen to max. zoom in, and double touch it again to max. zoom out.
Hot point	Touch the point where you want the camera to move.